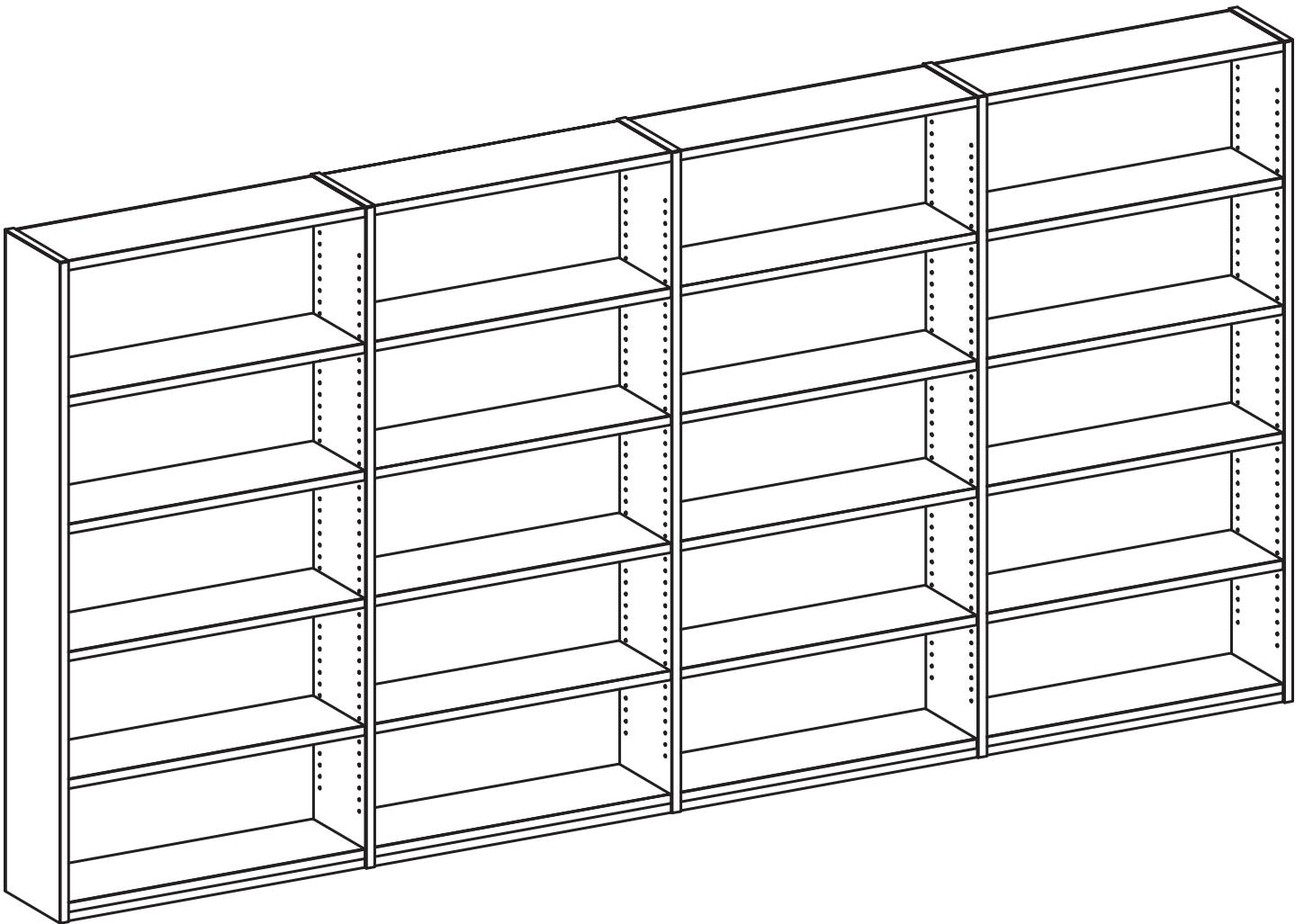


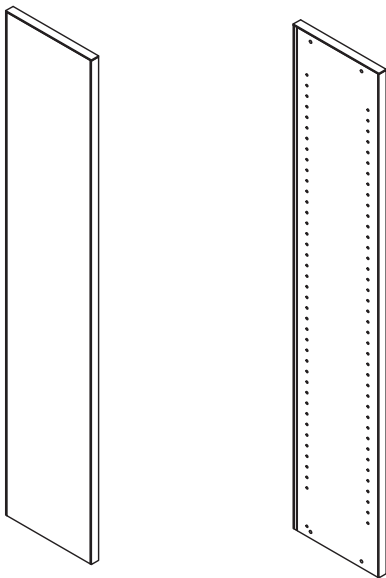
Blueridge

Installation Instructions
Stationary Shelving

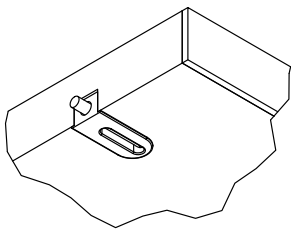


You should have

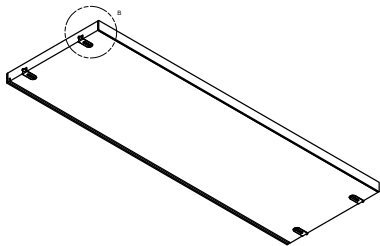
see unit schedule for actual quantities



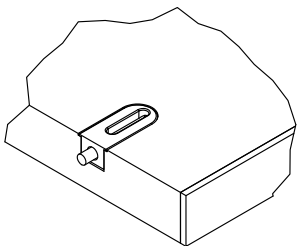
end/intermediate panel



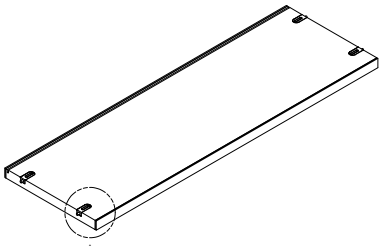
NOTE: Insert of the top sits proud of the laminate.



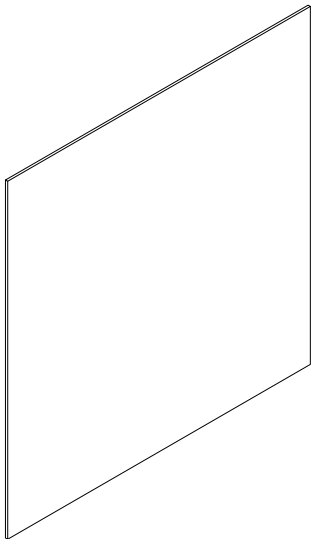
top



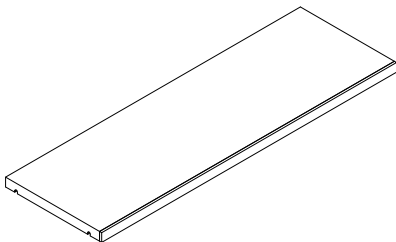
NOTE: Insert of the toe kick sits flush with the laminate.



toe kick



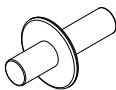
back panel



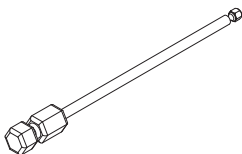
shelf



#4703125000

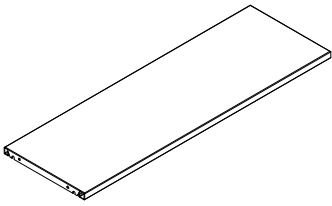


#48082

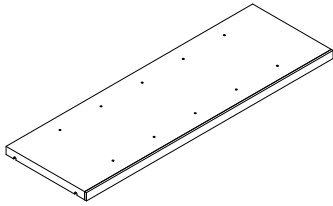


#52121

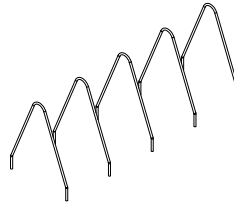
You might have



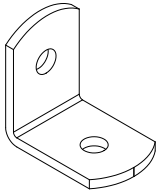
metal shelf



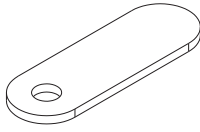
picture book shelf



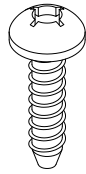
picture book divider



#52040



#52119



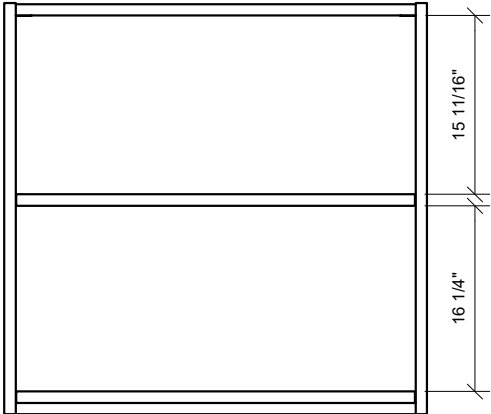
#50042

Shelf Details

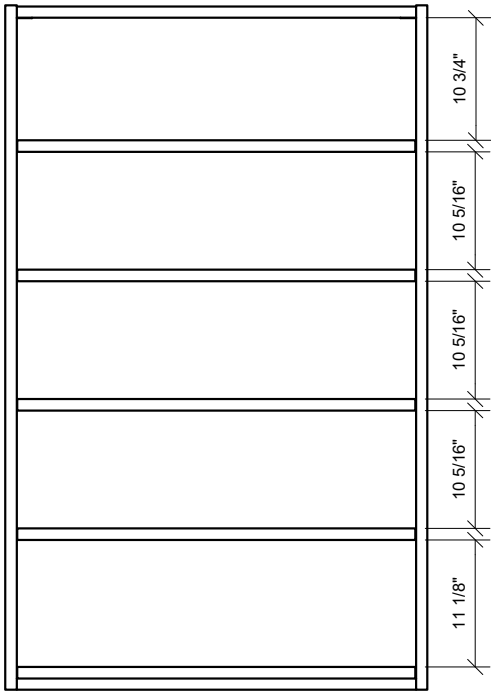
The following images are provided as a reference to show the typical spacing/details and number of shelves for each of our standard heights.



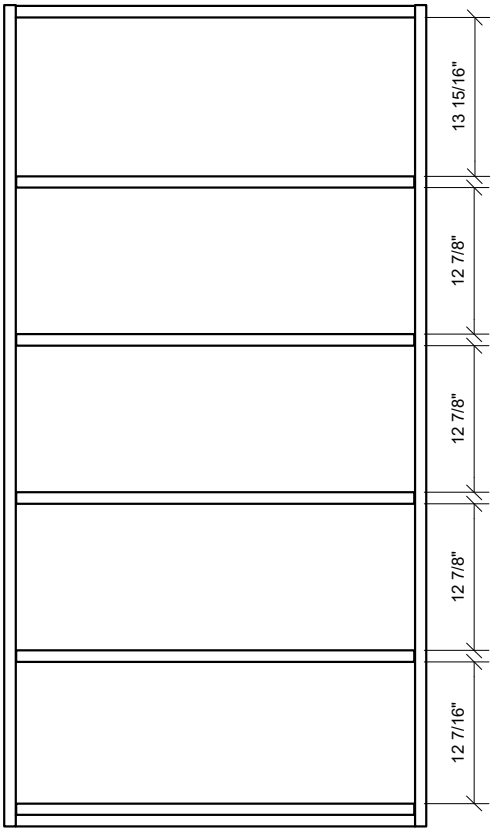
30" H Unit



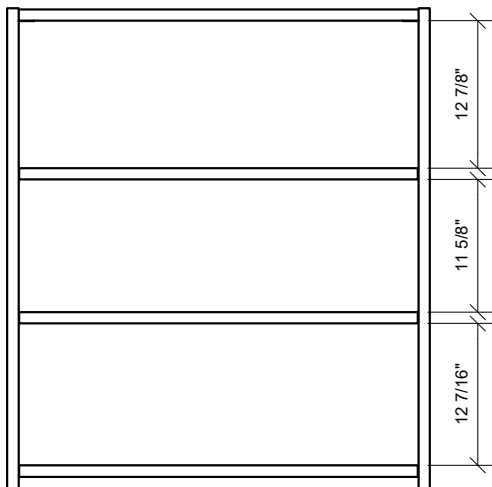
36" H Unit



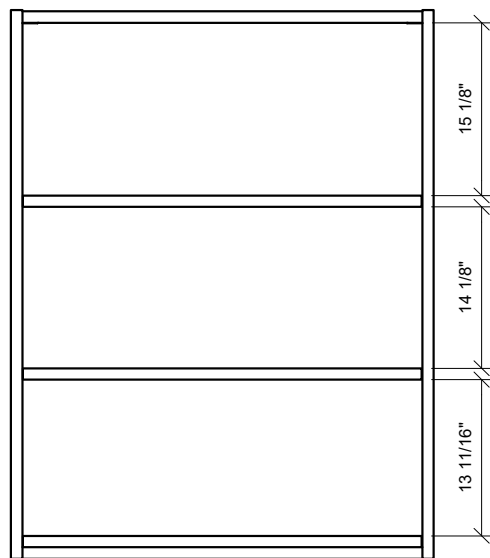
60" H Unit



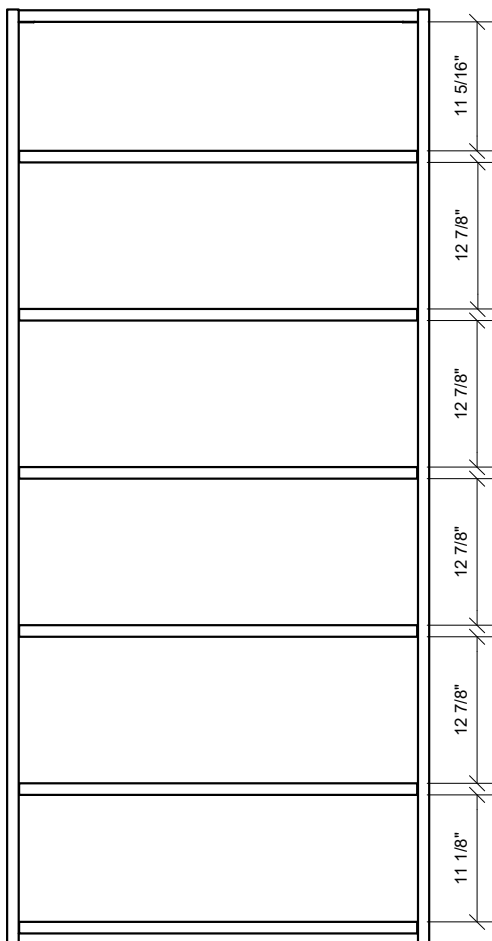
72" H Unit



42" H Unit



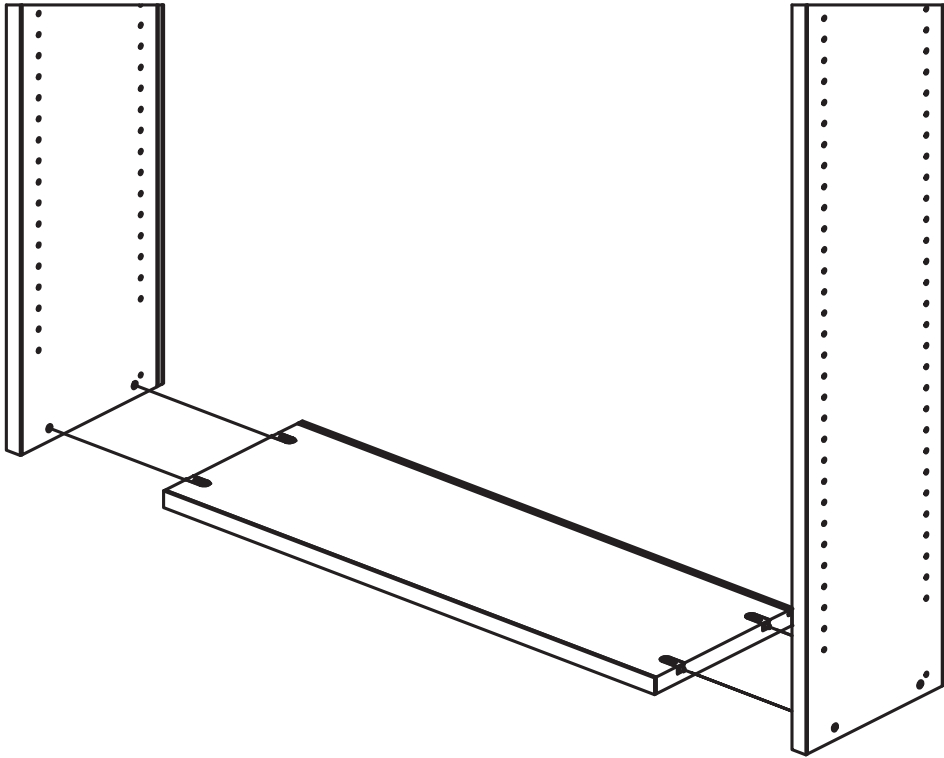
48" H Unit



82" H Unit

Core Parts Assembly

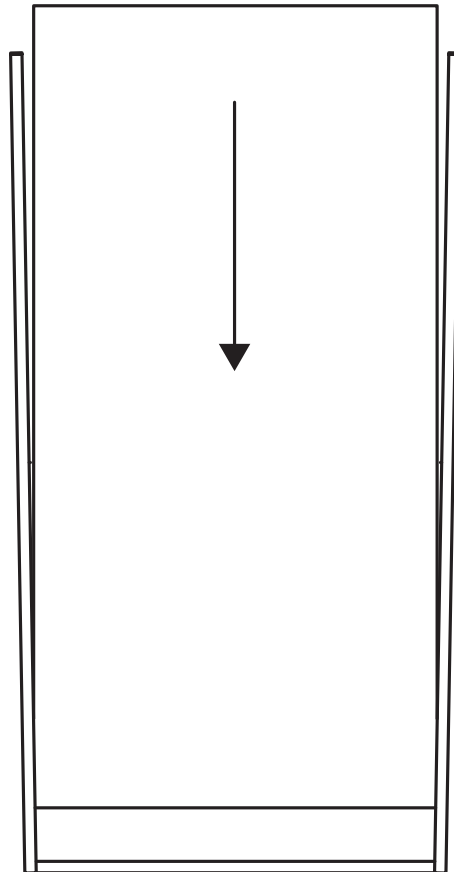
1



Toe Kick & End Panels

- Use the install tool #52121 to attach the pre-installed recessed cam locks in the toe kick to first end panel and intermediate panels.
- **NOTE:** The recessed cam locks sit flush with the top of the toe kick.

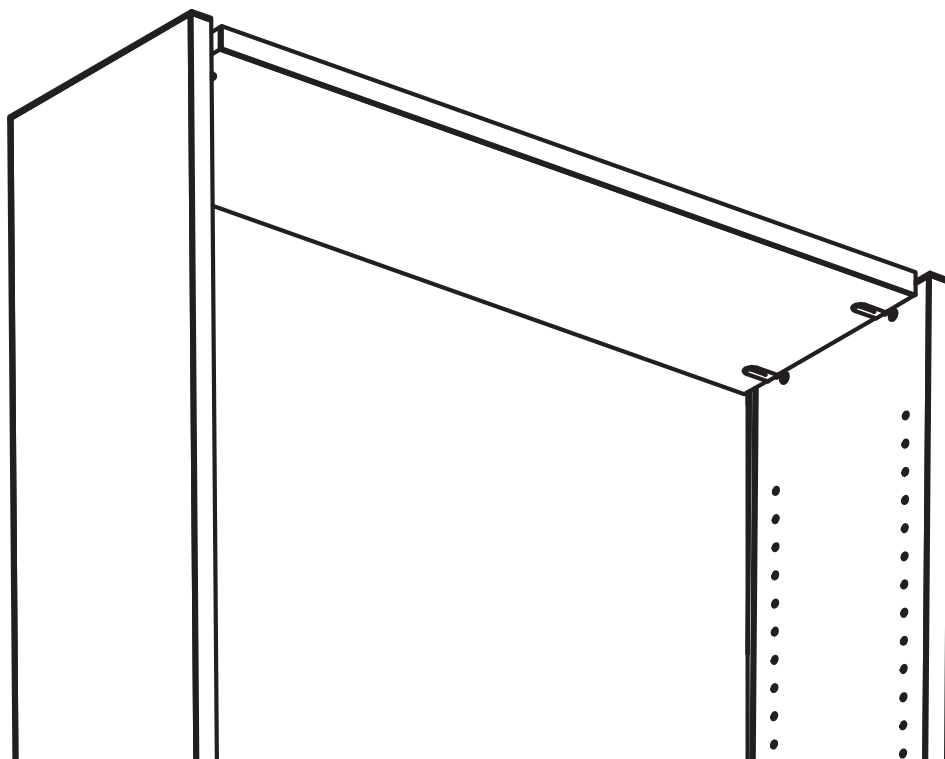
2



Back Panel

- Slide the back panel into the pre-routed grooves in the end and intermediate panels, dropping into the pre-routed groove in the toe kick.

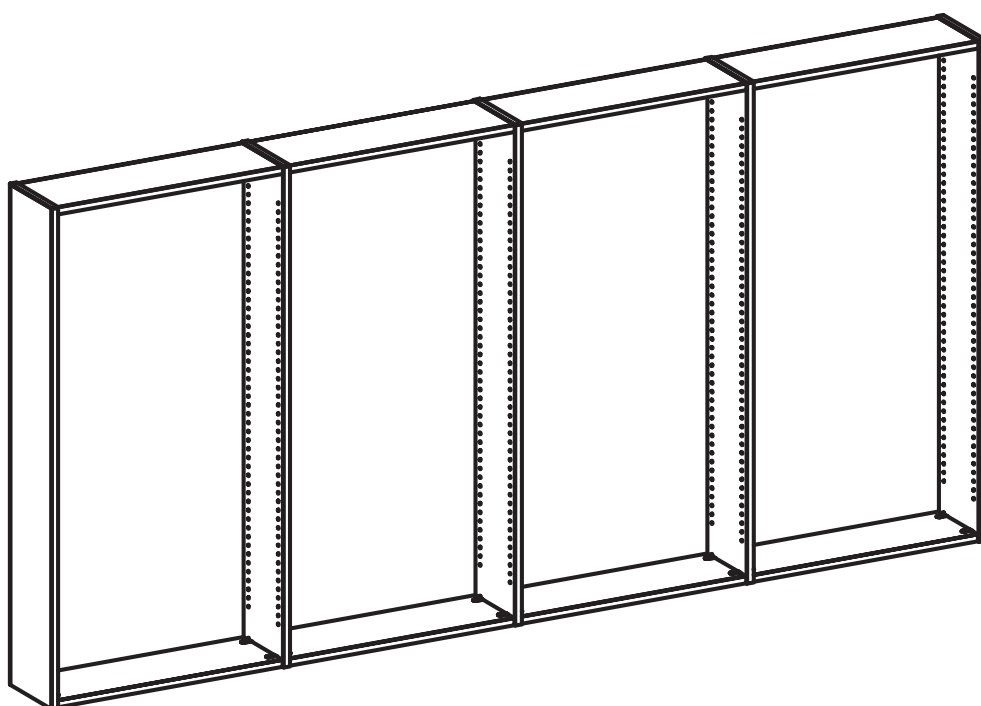
3



Modular Top

- Use the install tool #52121 to attach the pre-installed recessed cam locks in the modular top to the end and intermediate panels. Ensure the back panel sits in the groove of the top.
- **NOTE:** The recessed cam locks sit proud of the bottom of the modular top.

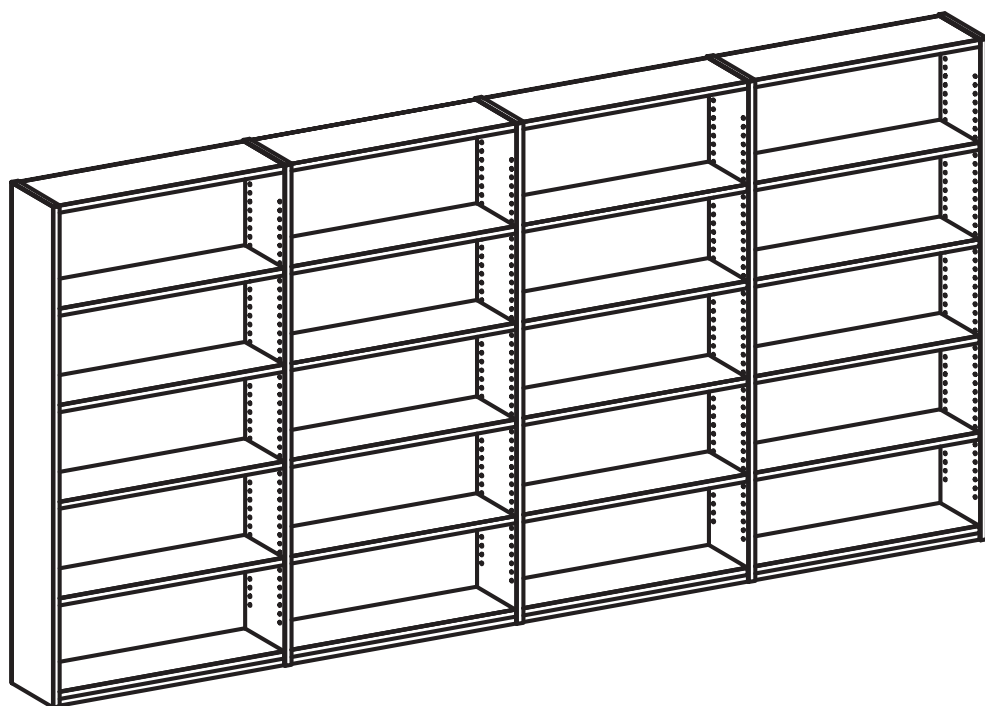
4



Complete Range

- Repeat steps 1 - 3 for the entire range of shelving.

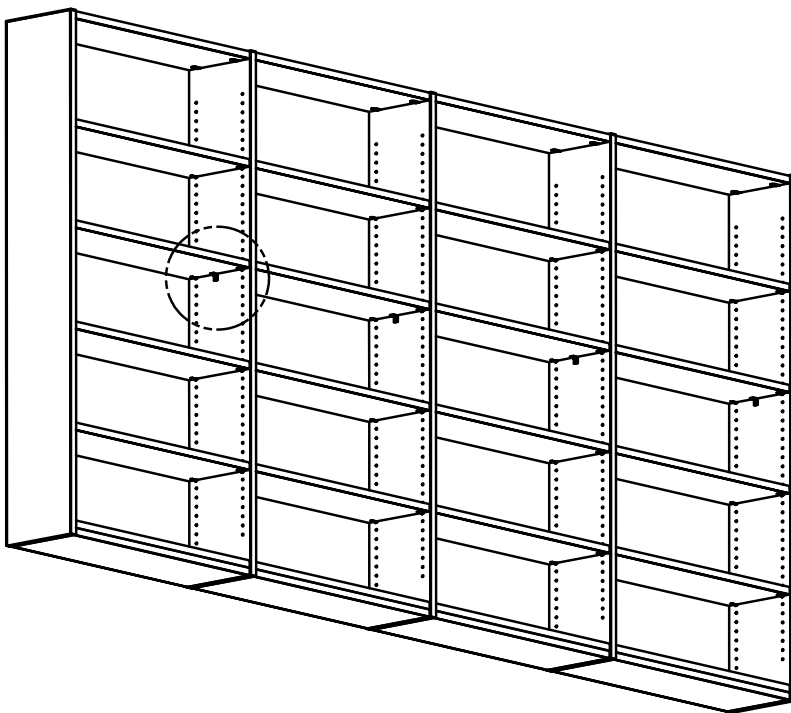
5



Shelves

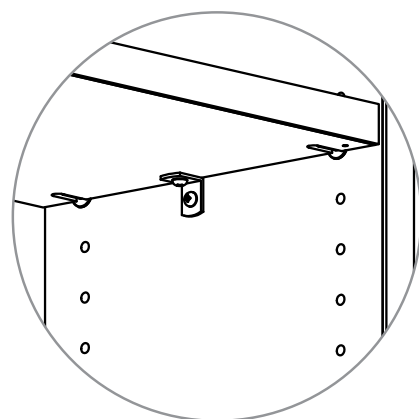
- Install all shelves with desired spacing.
- **NOTE:** Base shelves receive black shelf pins #4703125000, and all other shelves receive the bronze collared shelf pin #48082.

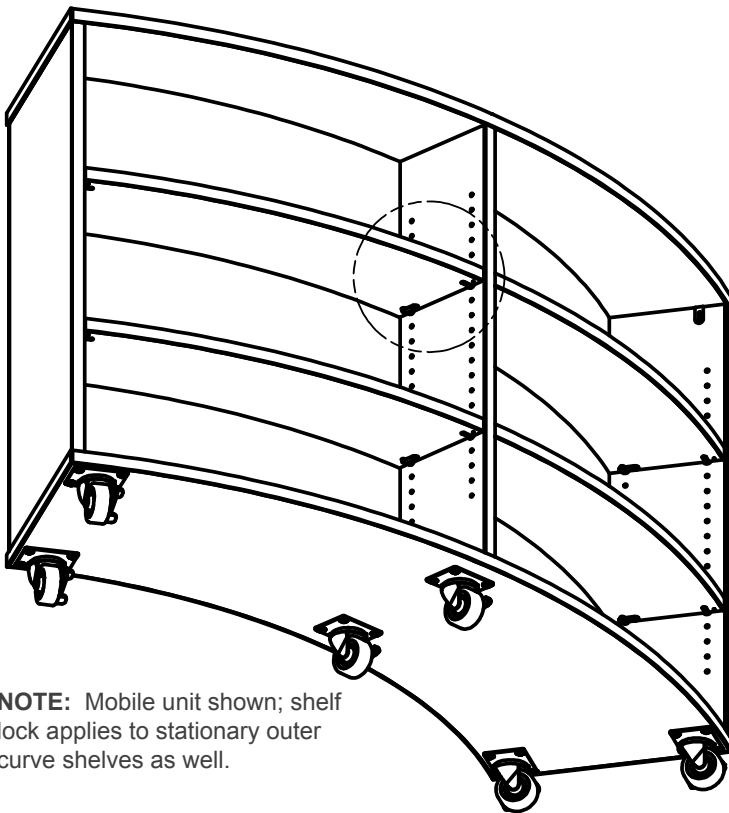
6



Fixed Shelf

- All shelving units 60" and higher require a shelf to be attached to the end and intermediate panels with (2) brackets #52040 and screws #50042. Fixed shelf should be as close to the middle of the height as possible.

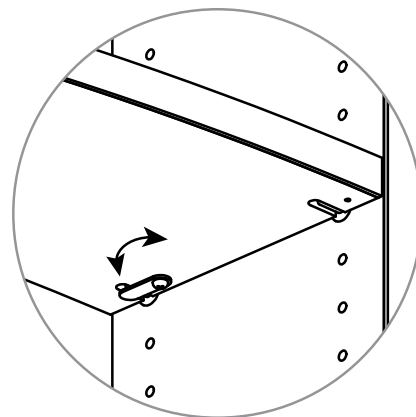




NOTE: Mobile unit shown; shelf lock applies to stationary outer curve shelves as well.

Shelf Lock Bracket

- All outer curve shelves require a shelf to be locked in by means of (2) shelf lock brackets #52119 and screws #52040 on the BACK shelf pin
- **NOTE:** Shelf lock brackets should be loose enough to freely rotated out of the way should shelf adjustments need to be made in the future.





design the furniture. ***innovate*** the space. ***engage*** the users.

liatfurniture.com

694 North Main Street · Troutman, NC 28166
TF 888 440 8205 · F 704 528 6519